

SEATTLE DESIGN CENTER

INSIDE DESIGN



INDEX

NEW FACES AROUND SDC

Get to know the new associates you'll be seeing around SDC!

03

SDC NEWS

See what's going on at SDC. Welcome new showrooms and new amenities announced.

03

INSPIRED DESIGN PODCAST

Go behind the scenes of Seattle Design Center's podcast!

04

THINGS WE LOVE

Fun and exciting items that will spark your imagination.

06

DESIGNER'S CHOICE

Get the inside scoop on what these designers love at SDC!

08

NEW AT SDC

Discover new lines and new collections. Be the first to get inspired.

10

SHOWROOM MAP

Locate showrooms & learn the layout of the Design Center.

14

SHOWROOM INDEX

Showrooms displayed by category to help you find exactly what you need.

15

NEW FACES AROUND SDC

Resource Furniture would like to welcome **Lisa Johnsen** as a Sales and Design Consultant. With a BFA in Interior Design and an MBA with a concentration in Project Management, Lisa is more than equipped to help clients with all of their furniture and design needs. When she is not flexing her design skills in the Resource showroom, she's likely cooking, baking, or generally enjoying good food with friends and family. We are thrilled to have Lisa on our Sales & Design team!



Resource Furniture would like to welcome **Paul Casey** as Project Manager. Having always been drawn to fine craftsmanship, it's no surprise that Paul eventually ended up making things. He focuses on metal crafts, feeling equally comfortable at his jewelry bench or blacksmithing at his anvil and forge. The fusion of function and beauty is what drew Paul into the realm of furniture. Resource is proud to welcome him to our Seattle showroom as our Project Manager!

For Employment Opportunities check out seattledesigncenter.com/sdcemployment

SDC NEWS



DESIGNER STUDIO

Welcome to a space to create, collaborate, connect, present, and design. Reserve SDC's Designer Studio for a curated space that lets creativity flow and ideas resonate. This complimentary amenity is open to all designers who source from SDC. Visit the link below to book either the morning (9:00am to 1:00pm) or afternoon (1:00pm to 5:00pm) spot. You can book both spots if you need the room for the full day, 9:00am to 5:00pm PST. Perks include a VIP Reserved Parking Spot (for you or your client), high speed internet, presentation center, printer & office supplies, and complimentary beverages. To reserve the Designer Studio, visit seattledesigncenter.com/designerstudio.

INSPIRED DESIGN



Interviewing Linda Derschang at Linda's Tavern

Everything and everywhere starts with a story. Inspired Design will pique your visual curiosity and heighten your senses as you are transported by iconic PNW creators into the depths of their favorite iconic spaces. Explore with us familiar places and dive into never-before-shared personal, intimate sanctuaries. Honest, fun, inspiring conversations bringing you a genuine appreciation for the intricacies of design, newfound knowledge about the brilliant minds that amaze us, and the distinctive spaces that evoke emotion.

Seattle Design Center's podcast highlights iconic Pacific Northwest creators in the iconic spaces that inspire them.



Luly Yang showcasing her couture face masks



Nathan Myhrvold discussing his photograph of a blueberry



Touring the Space Needle with Alan Maskin of Olson Kundig

PODCAST



Learn from Inspired Design host Gina Colucci about her experience hosting Seattle Design Center's new podcast.



Gerry Tsutakawa sitting in his sculpture for Climate Pledge Arena

design talent here. We wanted to know the stories behind the iconic spaces and learn how the intricacies of our guests' surroundings fueled their inspiration. We are building on theater of the mind, bringing to life spaces and talking about design and atmosphere but really you can't see anything.

Are there any episodes that shifted your perspective?

It's fascinating how your perception of a space changes once you take a pause and dig deep into the details and stories. For example, I had never been in the Space Needle. Seeing it for the first time with Alan Maskin as our tour guide was so special. Now when I go I will always see the intricate details that went into the planning and the redesign, I will know the reason behind the moving glass floor or which giant steel beams are critical to its structural integrity. Then there are spaces you think you know, the ones that are the backdrop to your own personal stories. I have a few Linda's Tavern stories myself, but learning about its origin, it's a very intentional vibe created from Linda Derschang's spectacular imagination made me see that space in a totally different light.

What guest inspired you most?

Every single guest had me hanging on their every word. Each guest is a true master of their trade and each one had a fascinating path on how they got to where they are. I would leave each interview on a high, almost feeling like some of their creativity rubbed off on me. That's how I hope you feel after you listen to an episode, deeply and truly inspired and ready to create.

What's your favorite way to listen to an episode?

My favorite way to listen to an episode is on a walk or bike ride. To be out in nature and let the words fill my imagination.

Inspired Design is available wherever you get your podcasts.

What's unique about this podcast?

If you don't already know, Inspired Design focuses on iconic PNW creators in spaces that inspire them. The PNW hasn't had a specific podcast that highlights the local creative and



Everett Fitzhugh talking about the Seattle Kraken

JEWEL TONES



carmine

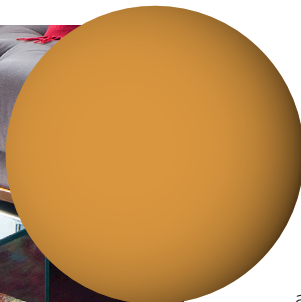
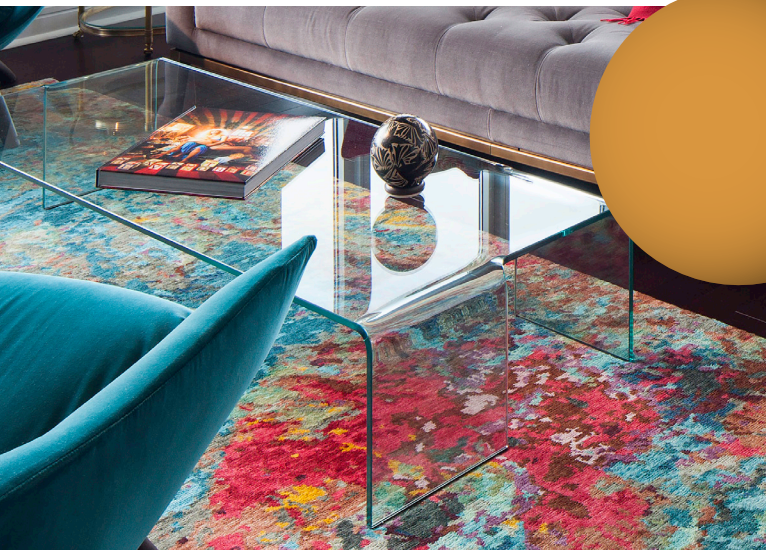
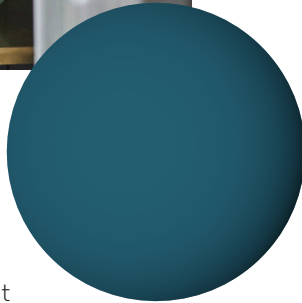
This dusty red shade brings a touch of warmth and romance to any palette while remaining understated. It's a versatile color that can be used as both an accent or in the background.

ARDECORA, AVAILABLE AT TRAMMELL-GAGNÉ

teal

Cooler weather means you need some cooler tones in your color palette, but that doesn't mean you have to go icy! This warmer blue-green combines PNW winter weather with the cozy indoor space we all want to spend our fall and winter.

JEWEL TONE COLLECTION, AVAILABLE AT RESOURCE FURNITURE



mustard

There is no better way to bring together primary jewel tones than with a deep, rich yellow. It works in any context -- walls, furniture, even rugs, and always serves as the glue any room needs.

ATLANTIS AQUA, AVAILABLE AT ANDONIAN RUGS



D É C O R



Sometimes it's the little things that count! Adding in special touches like patterned lampshades, colorful rugs, or artistic accents can personalize and transform a space to make it feel like home.

CLOCKWISE FROM TOP: CURATED LAMPSHADES, AVAILABLE AT KRAVET; SHIIR RUGS, AVAILABLE AT JENNIFER WEST; GLOBAL VIEWS, AVAILABLE AT J GARNER HOME



DESIGNER'S CHOICE

CHRISTY YADEN



I am loving Schumacher's Pyne Hollyhock. It's such a timeless classic (designed in the 1960's by Albert Hadley) but still feels current. The charcoal color way is the perfect way to get a bit of floral into my project with it still feeling sophisticated. I think it pairs well with clean lined furnishings and a subtle color palette or sherbet colors that contrast well. The pattern is the perfect scale and contrast to create interest for any room.

I also love the Currey and Co's Briallen Demi-lune in white. Its curved shape nods to the past but also still feels very current. The star of the piece is the floral clasp/door pull which was inspired from the designer's brooch, so pretty! It is the perfect balance between clean lines and a bit of floral.

I am over the moon with being able to use both of these floral inspired accents for a current project. I am seeing more and more florals in design publications which I think creates a warm and welcoming atmosphere, something I strive for in my client's homes. I have a special box where I have been saving a sample of Cowtan and Tout's Summerby Chintz, which I hope to someday be able to use as an accent for a client's summery beach home or guest room.



Interior Design by Suellen Gregory
SCHUMACHER

**SCHUMACHER, AVAILABLE AT
THE DIXON GROUP**

**CURREY AND COMPANY,
AVAILABLE AT DFG**

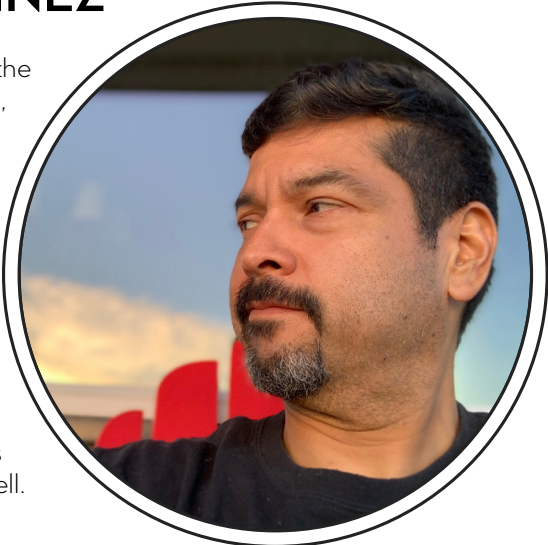


**COWTAN AND TOUT,
AVAILABLE AT TRAMMELL-
GAGNÉ**

Find out what these PNW designers are inspired by this season at Seattle Design Center.

CHRISTOPHER MARTINEZ

What truly inspires me most is the art of collaboration. In the last few years, I have found clients, artisans, craftspeople, and colleagues to be the source of my inspiration. They have been the ones to push my thoughts on design. Listening to a client's needs, desires, and likes will lead to wonderful discussions. Transferring those discussions to the craftspeople who can make the design come to life, is just an amazing journey to watch. One of my favorite companies to collaborate with is Patricia Edwards. The people there are open to ideas and know their craft so well that they will not hesitate to give suggestions to help make the final product the best that it can be. Ludwig Mies van der Rohe famously said, "God is in the details." Patricia Edwards understands this well.



DESIGNS BY CHRISTOPHER MARTINEZ



PATRICIA EDWARDS, AVAILABLE AT THE DIXON GROUP

NEW LINES &



New windows and doors make an incredible design statement. With an abundance of options to choose from, you can achieve an architectural design you are proud to come home to. While the style of windows and doors may be your first important selection, a very close second should definitely be what finish and color you want. We propose you look into the organic shades of Autumn!

SIERRA PACIFIC WINDOWS - SHOWROOM 229



This broadloom carpet is hand-loomed and can be fabricated into area rugs. Shown here: Antrim Carpets Paragon Point in Tuxedo.

RUBENSTEIN'S - SHOWROOM 221



Pindler has just released its new, exclusive Botanica Collection. The collection offers a large assortment of beautiful, bold, large-scale botanical designs. Each pattern features stunning hand-painted artwork and unique colorations ranging from soft pastels to rich, saturated hues.

PINDLER - SHOWROOM 223



Plasteel Frames and Gallery is pleased to announce our grand opening at the Seattle Design Center. Along with our own handcrafted hard wood frame line, we also showcase classic frame samples to compliment all works of art. We are currently showing contemporary work in our front gallery highlighting artists living in the Pacific Northwest. Our Antique Gallery is showing "American Masters" the inaugural exhibition and sale of late 19th and early 20th century American Paintings.

PLASTEEL - SHOWROOM 223

COLLECTIONS



J. Garner home is introducing Global Views' Rock Pillow Collection. These pillows come in various colors and are based on rock formation. The collection really came together after a trip to North Wales. Walking, one sees the many variations of shape and formation from very sharp to soft flowing forms.

J. GARNER HOME - SHOWROOM 254



Resource Furniture, leader in transforming and multi-purpose furnishings, is proud to unveil the Giro, the newest addition to our collection of transforming tables. Giro is a transforming console table/desk/dining table that pivots outward 90 degrees from the wall, unfolding itself to reveal a generous tabletop. When you're not using it as a console, Giro can function as a work surface or dining table for four. Nested underneath are customizable storage solutions, including cubbies, drawers, or even a file drawer. Giro is designed and made in Italy, and is available in over 35 different lacquer finishes to suit any space.

RESOURCE FURNITURE - SHOWROOM 239



Grounded in the seemingly magical process of transforming elements into something new, Alchemy is a magnificent collection of awe-inspiring textiles and wallcoverings. Influenced by nature and our ever-diverse and changing environment, the Brentano Design Studio meticulously curated the Alchemy Collection's thirteen versatile fabrics and four wallcoverings to be both physically and texturally stunning. By refining and emphasizing the beauty that lies within the details, the Fall 2021 collection accentuates organic patterns using mixed yarns, bold, striking patterns and minimal, serene designs with organic pattern work.

TRAMMELL-GAGNÉ - SHOWROOM 105

NEW LINES &



Kelly Forslund is excited to introduce ZAK+FOX's fall collection, Apiary. Named after the sanctuaries where man and bee work as one, it is a convergence of fantasy and nature – an imagined paradise both real and divine. 7 new wallpapers and 5 textiles present ZAK+FOX's perspective of the apian world, captured in a botanical wonderland.

KELLY FORSLUND - SHOWROOM 132



Lotus by Mokum, part of their latest Ikigai Collection, features giant rhythmic waterlily leaves and lotus flowers that have been carefully hand painted and arranged to create this contemporary drapery print. The two colorways, Powder and Willow, are soft and calming. Lotus has been digitally printed onto a 100% linen base cloth, which has been tumbled to create a soft elegant drape. Available at Jennifer West.

JENNIFER WEST - SHOWROOM 100



German Kitchen Center welcomes Casabath to their Seattle showroom.

GKC - SHOWROOM 228



Perennials Fabrics and Rugs is thrilled to present the Villa del Sol collection for Spring 2021.

SUSAN MILLS - SHOWROOM 200

COLLECTIONS



Holland & Sherry is pleased to present, The Coalesce Collection. Holland & Sherry's history and tradition are storied in the realm of apparel fabrics which translates seamlessly with interiors. Our newest collection is a tailored assortment of upholstered goods that follow suit.

HOLLAND & SHERRY - SHOWROOM 202



Jan Kath's latest rugs are inspired by Savonnerie carpets and the movement of Art Deco in France. His interpretation and design process lends itself to a variety of interiors. Make a statement with one of these beauties."

STACY LOGAN - SHOWROOM 235



The Mikado dining table by Ethnicraft.com/us/en/. Its sculptural character is the result of a quest to find a balance between functionality and stability. Mikado's legs interlock like a well-thought-out puzzle. By exchanging the rectangular tabletop by an ellipse, we increase togetherness and connection.

LEFLAR LTD. - SHOWROOM 210



Baker Interiors Group is delighted to announce its new collections with distinguished designer Barbara Barry for Baker and McGuire. Debuting in Spring 2021, the collections are the latest introductions by Barry for Baker Interiors Group, representing a dynamic partnership that spans nearly 20 years.

BAKER - SHOWROOM 127

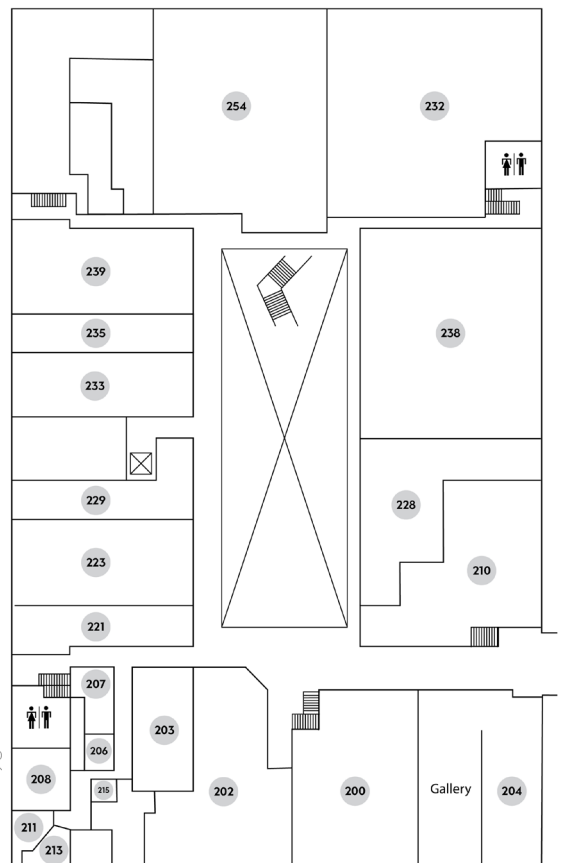
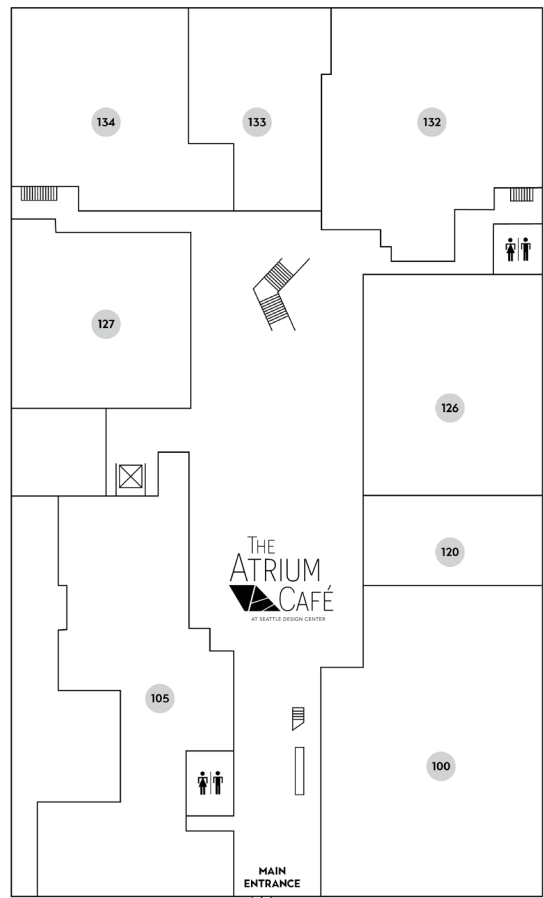
SDC MAP

1ST FLOOR

Jennifer West100
 Trammell-Gagné105
 Andonian Rugs.....120
 Kravet & The Shade Store.....126
 Baker/McGuire127
 Kelly Forslund132
 Plasteel Frames & Gallery133

2ND FLOOR

Susan Mills Showroom200
 Holland & Sherry202
 William & Wayne203
 Heritage School.....204
 Jules Vanderburg Fine Jewelry &
 Design206
 Foss Appraisal Service, LLC ..207
 Designer Studio.....208
 Leflar Ltd.210
 NWSID211
 ASID213
 Ellentuck Interior Design.....215
 Rubenstein's.....221
 Pindler223
 German Kitchen Center228
 Sierra Pacific Windows229
 The Dixon Group232
 Absolute Sequel.....233
 Stacy Logan235
 DFG238
 Resource Furniture.....239
 J. Garner Home254



SHOWROOM INDEX

FURNITURE

Baker, 127
DFG, 238
The Dixon Group, 232
Holland & Sherry, 202
J. Garner Home, 254
Jennifer West, 100
Kelly Forslund, 132

Kravet, 126
Leflar Ltd., 210
Resource Furniture, 239
Susan Mills, 200
Trammell-Gagné, 105
William & Wayne, 203

OUTDOOR FURNITURE

Baker, 127
DFG, 238
Holland & Sherry, 202
J. Garner Home, 254
Jennifer West, 100
Kelly Forslund, 132

Kravet, 126
Leflar Ltd., 210
Susan Mills, 200
Trammell-Gagné, 105
William & Wayne, 203

ACCENTS/ACCESSORIES/ART

Baker, 127
DFG, 238
The Dixon Group, 232
Holland & Sherry, 202
J. Garner Home, 254
Jennifer West, 100

Kelly Forslund, 132
Kravet, 126
Leflar Ltd., 210
Trammell-Gagné, 105
William & Wayne, 203

KITCHEN & BATH

Absolute Sequel, 233
German Kitchen Center, 228

WINDOW COVERINGS

The Dixon Group, 232
Jennifer West, 100
William & Wayne, 203

Kravet - The Shade Store, 126

FLOORING & SURFACES

Rubenstein's, 221

BEDDING & TABLE TOP

DFG, 238
The Dixon Group, 232
J. Garner Home, 254

Kravet, 126

LIGHTING

Baker, 127
DFG, 238
The Dixon Group, 232
Holland & Sherry, 202
J. Garner Home, 254
Jennifer West, 100

Kelly Forslund, 132
Kravet, 126
Leflar Ltd., 210
Trammell-Gagné, 105
William & Wayne, 203

TEXTILES

Baker, 127
DFG, 238
The Dixon Group, 232
Holland & Sherry, 202
J. Garner Home, 254
Jennifer West, 100
Kelly Forslund, 132

Kravet, 126
Leflar Ltd., 210
Pindler, 223
Susan Mills, 200
Trammell-Gagné, 105
William & Wayne, 203

FLOOR COVERINGS

Andonian Rugs, 120
DFG, 238
The Dixon Group, 232
Holland & Sherry, 202
J. Garner Home, 254
Jennifer West, 100
Kelly Forslund, 132

Leflar Ltd., 210
Rubensteins, 221
Susan Mills, 200
Stacy Logan, 235
Trammell-Gagné, 105

CABINETRY

Absolute Sequel, 233
German Kitchen Center, 228

DFG, 238
William & Wayne, 203

DOORS & WINDOWS

Sierra Pacific Windows, 229

ART & FRAMING

Plasteel Frames & Gallery, 133

JEWELRY

Jules Vanderburg, 206
J. Garner Home, 254



SEATTLE DESIGN CENTER

Shop the Pacific Northwest's premier destination of luxury design. Multiple showrooms offer the best curated selection of furniture, décor, accents, rugs, lighting, kitchen and bath lines so you can create one of a kind spaces.

5701 Sixth Ave S. Seattle, WA
Monday - Friday | 9:00am to 5:00pm

Phone: (206) 762-1200

SeattleDesignCenter.com

[@SeattleDesignCenter](https://www.instagram.com/SeattleDesignCenter)